

# VALDUR

## Technical data sheet



Made in  Sweden

## VALDUR – Technical Product Description

VALDUR – Technical Product Description:

Designed for 100,000 hours of operation using long-life materials.  
Corrosion-resistant glass fibre reinforced SMC thermoset composite.  
No paint that ages.  
No coating that can peel.  
Scratches do not affect the material's corrosion resistance.  
Electrically insulating housing contributes to increased electrical safety.

Patent-pending integrated thermal management system ensuring stable temperature control and long service life. Developed for stable operation at ambient temperatures up to +35 °C.

Composite material with lower CO<sub>2</sub> footprint than die-cast aluminium.

Low material weight for easier handling and installation.  
Composite housing weight: 1.8 kg (total weight from 3.5 kg).

Programmable Philips/Signify Xitanium driver.  
DALI-2 and CLO available when required.

Optics for streets, pedestrian & cycle paths, and parks.  
Philips/Signify LED modules 2200K–5700K.  
Amber option 1900–3000K with reduced blue light content.

Radio-transparent construction for integrated IoT.

Light grey



Black



Wind area:  
0,033 m<sup>2</sup>

## Technical data:

	L90/L100 Life length 100 000 h		Ta -40~+35 °C	IP66	CE	
IK08			25-year warranty on luminaire housing**	5-year functional warranty		

### • Driver – Philips:

Philips Xitanium LP – Lite Programmable (**Standard**)

### Alternatives:

Philips Xitanium FP – Full Programmable  
Philips Xitanium SR – Sensor Ready  
Philips Xitanium CR – Connected Ready

### • LED-moduler Philips:

- LED Fortimo FastFlex UHE – Ultra High Efficiency (**Standard**)

### Alternatives:

- LED Fortimo FastFlex HE – Warm colour temperatures  
- LED Fortimo FastFlex Color Revive – High colour rendering

### • Optik: LEDIL STRADA DWC 2x2 – IESNA Type III (medium)

Alternative light distributions available

• **Colour Temperature:** 2200K, 2700K, 3000K, 4000K, 5000K

• **Amber Optic Colour Temperature:** 1900K-3000K

• **Colour Rendering:** CRI 70 (**Standard**), ColorRevive CRI 80

• **Lifetime:** +100 000 hours

• **Operating temperature:** -40 till + 35 °C

• **Connection Cable:** VALDUR 10-20: 6m. VALDUR 30-60: 8m.  
VALDUR 100: 10m. Custom cable lengths available upon request

• **Ingress Protection:** IP66

• **Supply Voltage:** 220-240 V / 50-60 Hz

• **Protection Class:** Class II

• **Inrush Current:** 120 A / 277µs

• **Glass:** 4 mm tempered glass. Alternative: Frosted glass

• **Impact Resistance:** IK08

• **Material:** Glass fibre reinforced SMC-thermoset composite

• **Fasteners:** Stainless steel 316 (marine grade)

• **Colour:** Light grey, black (paint recommended to maintain deep colour tone), or optional colour upon request.

• **Weight:** from 3.5kg till 4.2kg

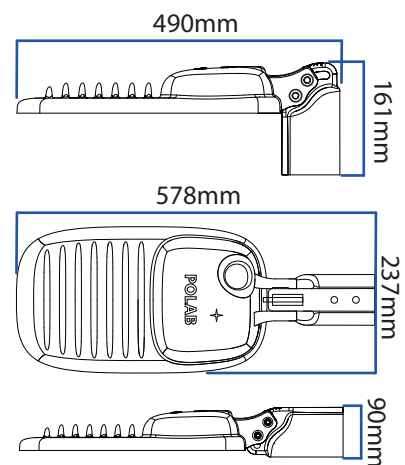
• **Installation:** Ø 48 eller 60 mm

• **Adapter Ø48mm:** For centring the luminaire on pole/pipe

• **Surge Protection:** Integrated in driver. Alternative:

Separate SPD surge protection 10 kV

## Dimensional drawing:



## 25 years Warranty on housing

The thermoset composite housing is covered by a 25-year warranty regarding retained strength and structural integrity under normal use and correct installation.

The warranty applies to the load-bearing structure of the housing.

Surface changes such as fading or natural ageing are not covered.\*\*

## Optics – LEDiL 2x2

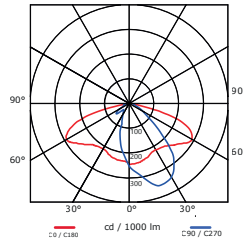
Wide range optics:

- Narrow streets, main roads and squares
- Parks and open areas
- Symmetrical or asymmetrical light distribution
- Reflector or lens optics
- Amber lens and backlight shield available as options

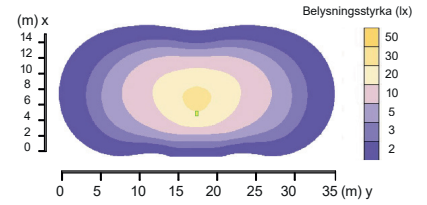
Optics are optimised according to mounting height, pole spacing and required lighting class.

## Light Distribution Curve:

VALDUR (standard) lens  
LEDiL STRADA DWC 2x2  
IESNA Type III (medium)



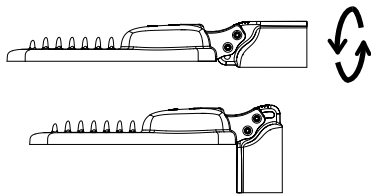
## Calculation Results Colour Scale:



VALDUR 30, 4000K, 3946 lm  
LEDiL STRADA DWC  
Mounting height: 6 m

## Installation Flexibility

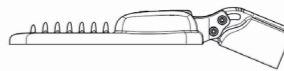
- Horizontal pole arm – 180° adjustable
- Vertical pole top – 90° adjustable



- The pole mounting system must be rotated when switching between horizontal arm mounting and vertical pole-top installation.
- The luminaire can be factory pre-set with the desired tilt angle. Bulk packaging is available as an option.

Max. angle arm (180°)

-20 grader

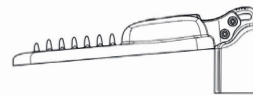


+20 grader

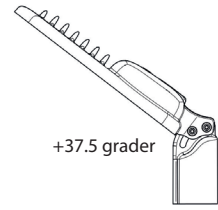


Max. angle pole mounted (90°)

-5 grader



+37.5 grader



## VALDUR adapter for Ø48mm pole



Adapter for pole/tube with Ø48 mm diameter. Centres the luminaire in the pole and simplifies installation.

## Connection Cable

- VALDUR 10–20: 6 m pre-mounted cable
- VALDUR 30–60: 8 m pre-mounted cable
- VALDUR 100: 10 m pre-mounted cable

Need a different cable length?

Custom lengths are available upon request. The cable can also be supplied in a stiffer version for poles with long arms.

## VALDUR standard version, article-nr & E-nr:

### Product - 3000K

VALDUR 10, 1805 lm, 12.0 W, 150.0 lm/W, 220 mA, 6m cable  
VALDUR 20, 2443 lm, 15.8 W, 154.6 lm/W, 294 mA, 6m cable  
VALDUR 30, 3946 lm, 22.9 W, 172.0 lm/W, 300 mA, 8m cable  
VALDUR 40, 5669 lm, 33.6 W, 158.0 lm/W, 454 mA, 8m cable  
VALDUR 60, 7472 lm, 44.6 W, 159.0 lm/W, 404 mA, 8m cable  
VALDUR 100, 10147 lm, 65.8 W, 157.0 lm/W, 588 mA, 10m cable

### Product - 4000K

VALDUR 10, 1832 lm, 12.0 W, 152.7 lm/W, 220 mA, 6m cable  
VALDUR 20, 2443 lm, 15.5 W, 157.5 lm/W, 294 mA, 6m cable  
VALDUR 30, 3946 lm, 22.5 W, 175.9 lm/W, 295 mA, 8m cable  
VALDUR 40, 5669 lm, 33.3 W, 170.0 lm/W, 447 mA, 8m cable  
VALDUR 60, 7472 lm, 45.6 W, 163.7 lm/W, 398 mA, 8m cable  
VALDUR 100, 10147 lm, 63.8 W, 159.9 lm/W, 574 mA, 10m cable

### Product - 1900K Bio with Amber

VALDUR 10, 1805 lm, 16.8 W, 107.0 lm/W, 320 mA, 2x4, 6m cable  
VALDUR 20, 2443 lm, 22.1 W, 110.0 lm/W, 288 mA, 2x6, 6m cable  
VALDUR 30, 3946 lm, 31.5 W, 125.0 lm/W, 474 mA, 3x6, 8m cable  
VALDUR 40, 5669 lm, 44.9 W, 126.0 lm/W, 451 mA, 3x6, 8m cable  
VALDUR 60, 7472 lm, 66.1 W, 113.0 lm/W, 606 mA, 3x6, 8m cable

## Order with Zhaga Socket

Zhaga mounted on top or bottom. Philips Xitanium SR driver for integration with control systems (node and sensor).



Zhaga mounted on the bottom



Zhaga mounted on top

## Order with Integrated AirGlow Radio Module

AirGlow by LumenRadio. The radio module can be factory integrated in the luminaire or mounted via Zhaga socket with node.

Mesh-based communication with extended range, suitable for installations with long pole spacing.

Wireless mesh-based control system (MiraMesh). Zhaga Book 18, DALI-2 and D4i compatible.

- Astronomical clock, time-based and presence control
- Up to 200 nodes per zone
- Scene logic with priority (presence > time > astro)
- App-based commissioning via Bluetooth
- Self-healing and interference-resistant communication

## Order with Tridonic Control or PIR

Tridonic node for smart control. Gateway solution available. With PIR sensor detects changes in body heat and activates lighting upon presence.

### LJUSGRÅ

Artikel nr	E-nr
VL010-30K-GRY	7729476
VL020-30K-GRY	7729477
VL030-30K-GRY	7729478
VL040-30K-GRY	7729479
VL060-30K-GRY	7729480
VL100-30K-GRY	7729481

VL010-40K-GRY	7729470
VL020-40K-GRY	7729471
VL030-40K-GRY	7729472
VL040-40K-GRY	7729473
VL060-40K-GRY	7729474
VL100-40K-GRY	7729475

Artikel nr	E-nr
VL010-19K-GRY	7729494
VL020-19K-GRY	7729495
VL030-19K-GRY	7729496
VL040-19K-GRY	7729497
VL060-19K-GRY	7729498

### SVART

Artikel nr	E-nr
VL010-30K-BLK	7729488
VL020-30K-BLK	7729489
VL030-30K-BLK	7729490
VL040-30K-BLK	7729491
VL060-30K-BLK	7729492
VL100-30K-BLK	7729493

VL010-40K-BLK	7729482
VL020-40K-BLK	7729483
VL030-40K-BLK	7729484
VL040-40K-BLK	7729485
VL060-40K-BLK	7729486
VL100-40K-BLK	7729487

Artikel nr	E-nr
VL010-19K-BLK	7729501
VL020-19K-BLK	7729502
VL030-19K-BLK	7729503
VL040-19K-BLK	7729504
VL060-19K-BLK	7729505

## Order with Radar Control from Comlight

24 GHz Doppler radar for real-time adaptive dimming of street lighting. Detects movement (not heat) and operates reliably in rain, snow and Nordic climate conditions.

- Fast response for improved safety – reacts instantly to movement
- Detects cyclists and vehicles at longer distances
- Radar monitors movement across the entire detection field
- Reliable in rain, snow and Nordic climate
- Adjustable detection field
- Up to 254 luminaires per chain
- 4G gateway available for remote management and LMS access.

Can be integrated with weather station for dynamic power adjustment (reduced glare on wet or snow-covered roads).

## Eagle Eye – Zhaga Version with Node

- Zhaga Book 18 compatible radar for luminaire mounting.
- Can operate as Master or Device B
- Gateway option for remote access

## Eagle Eye 3.0 – Pole-Mounted Radar

Universal pole-mounted unit.

## Order with Easyform Hytronic

Hytronic Simple Control, with PIR or microwave sensor, provides a simple and cost-effective lighting control solution for installations requiring a minimal control system. Sensors can be used as Device B.



Professional Lighting POLAB

© 2026. Professional Lighting POLAB,  
Data subject to change without notice.

Address:

Telephone:

Email:

Homepage:

Stora Vägen 31, SE-513 33 Fristad

+46 (0) 33-400 44 00

info@polab.se

www.polab.se